

Appendix 5 – Members Survey Results

The Coventry Community Safety Partnership (CCSP) consultation was presented to the Scrutiny Committee on 18th December 2024. Members received a survey afterwards to provide feedback. The results of the survey are presented below.

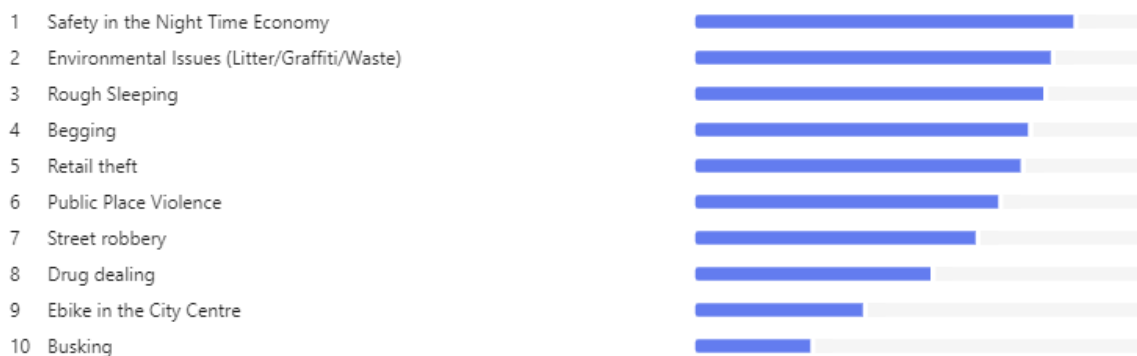
Members identified Tackling Serious Violence (gangs and knife crime) as a top priority, followed by addressing Anti-Social Behaviour (ASB), Domestic Abuse and Safety in the Night-Time Economy (NTE).

What topics do you think should be a priority for the CSP?



The primary concerns in the city centre included Safety in the NTE, environmental issues rough sleeping and begging.

What are your biggest concerns in the City Centre?



Members indicated that resource constraints were the biggest challenges faced by agencies.

What is the biggest challenge to Local Authorities and partners in dealing with location based issues. ?

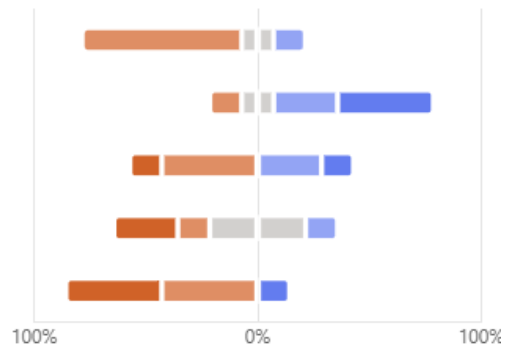


There was a consensus on the need for agencies to work collaboratively to address location-based issues such as ASB.

Do you agree or disagree with the following statements?

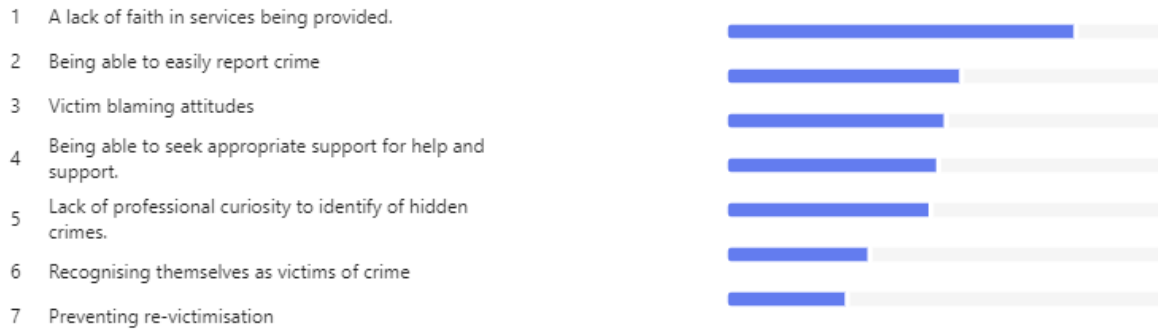
● Strongly Agree ● Agree ● Neither agree or Disagree ● Disagree ● Strongly Disagree

- Agencies work collaboratively to address location-based issues.
- There are sufficient resources across agencies to address location-based issues
- More CCTV is required across the city
- Resources are too heavily weighted to impact areas (areas with more demand) within the City
- More investment is required to support services to tackle the underlying issues to why people commit crime.



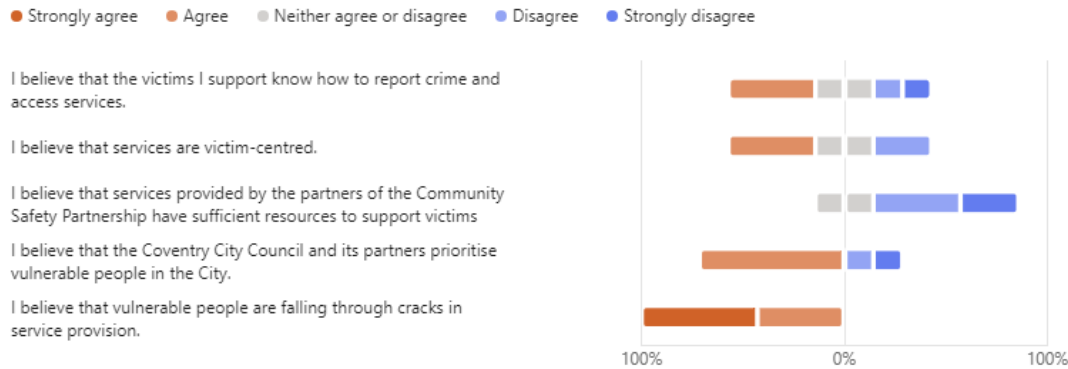
Members noted that a perceived lack of faith in services was a notable challenge for victims, emphasising the need for improved support systems for crime victims. They observed that victim-blaming attitudes presented additional difficulties for victims.

What is the biggest challenges facing victims of crime ?



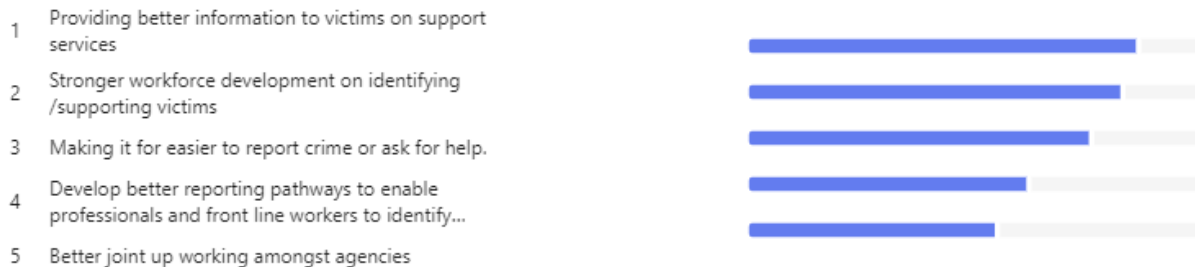
Members felt that victims knew how to report crime and access services. The Council prioritises victims and generally offers victim-focused services. However, there are concerns about insufficient resources and the risk of vulnerable people falling through the gaps of service provision.

Do you agree or disagree with the following statements?



Members concluded that we can better support victims of crime by improving the information provided on support services. Additionally, we should focus on developing our workforce to effectively identify and support victims while also making it easier to report crimes or seek assistance.

How can we better support victims of crime?



It was suggested that offending and reoffending could be better addressed through supported accommodation and early intervention via mentoring and support to deter individuals, particularly the youth, from entering the criminal justice system.

What measures should be taken to reduce reoffending?

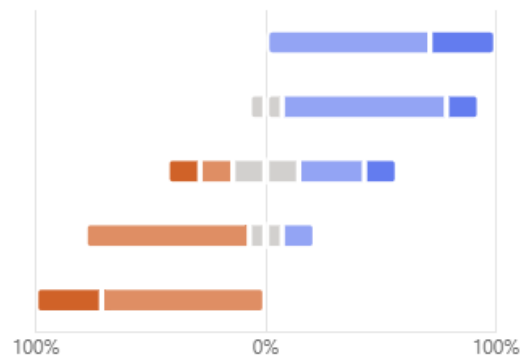


There is a need to ensure that the role and activities of the CCSP are adequately promoted to enhance public understanding of its functions.

Do you agree or disagree with the following statements?

● Strongly Agree ● Agree ● Neither Agree or Disagree ● Disagree ● Strongly Disagree

The public have a good understanding of the work being done to prevent reoffending?
 There are sufficient resources available between agencies to support offenders
 Prison leavers should receive increased priority for housing on homefinder programme
 Coventry has strong partnerships to prevent and reduce the number of children and young people entering the criminal justi...
 I believe that vulnerable people are falling through cracks in service provision.



Members generally understood the CCSP but lacked knowledge of its lower-level structure. The survey indicated a need for better communication of priorities and their monitoring to both members and the public.

Do you agree or disagree with the following statements?

● Strongly agree ● Agree ● Neither agree nor disagree ● Disagree ● Strongly disagree

I have a clear understanding of the roles and responsibilities of the Community Safety Partnership
 I have a good understanding of the structures underneath the Community Safety Partnership and the accountabilities each...
 I understand the priorities of the board and how it monitors the performance of its priorities.
 I know how to raise issues through the Community Safety Partnership if I have concerns.
 The public has access to information regarding the Community Safety Partnership and its priorities as a partnership.

