

17th July 24
Community Mental Health Transformation Adult Social Care Market Position Statement Refresh
4th September 24
Cabinet Member Priorities of the year Health Sector Skills Development
9th October 24
All Age Autism Strategy 2021-2026 Implementation Update Suicide Prevention Strategy
13th November 24 11th December 24 22nd January 25
Changes to the POD Service Health and Wellbeing in Schools – joint with SB2
26th February 25 2nd April 25 TBC
Virtual Beds Preparing for Adult Social Care CQC Assurance ICB efficiency savings GP/Primary Care Access Access to Dentistry Digital Access to Health A& E Waiting Times Integrated Health and Care Delivery Plan Improving Lives (July 2025) Healthwatch Annual Report Safeguarding Adults Annual Report Sport and Physical Activity Strategy Womens Health Strategy Ambulance Service / Fire Service PALS Adult Social Care Self-Assessment Adult Social Care Local Account (Cabinet)

Health and Social Care Scrutiny Board Work Programme 2024/25

Date	Title	Detail	Cabinet Member/ Lead Officer/ Organisation
17th July 24	Community Mental Health Transformation	To scrutinise community based mental health and emotional well-being services for the adult population of Coventry with an emphasis on restoration and recovery from Covid-19. To bring in the summer.	Coventry and Warwickshire Partnership Trust – (Beth Osbourne), Eleanor Cappell Cllr Bigham Pete Fahy/ Sally Caren/Aideen Staunton/
	Adult Social Care Market Position Statement Refresh	Production of a Market Position Statement (MPS) for Adult Social Care is a legal requirement under the Care act (2014). The document signals to the market, the type and volume of services that the Council wishes to see in the market with associated quality standards. Secure comment from SB5 prior to going forward to Cabinet Member for approval later in July	Jon Reading Cllr Bigham
4th September 24	Cabinet Member Priorities of the year		Cllr Caan / Cllr Bigham
	Health Sector Skills Development	Identified by Members to scrutinise work in the City by partners, including Warwick and Coventry Universities to train and retain health professionals in Coventry. People Board.	Integrated Care System – Rose Uwins / Felicity Davies ICB / Wiebke White
9th October 24	All Age Autism Strategy 2021-2026 Implementation Update	This report was scrutinised by the Board prior to it being approved by Cabinet in February 2022. The	Pete Fahy Sally Caren Jeanette Essex

Health and Social Care Scrutiny Board Work Programme 2024/25

Date	Title	Detail	Cabinet Member/ Lead Officer/ Organisation
		Board welcomed the ambitious plans and requested an update on its delivery.	Michelle Cresswell
	Suicide Prevention Strategy	A progress on implementation	Jane Fowles Catherine Aldridge Allison Duggal
13 th November 24			
11 th December 24			
22 nd January 25	Changes to the POD Service	A progress on implementation following the item on 17 th January 2024 Clarity and patient safety issues regarding 6 monthly repeat prescriptions. Pack of Assets to be sent to be circulated (including how to use the NHS App and if ID is required to register)	ICB - Rose Uwins Angela Brady
	Health and Wellbeing in Schools – joint with SB2	To look at what is being done to promote health and well-being in schools and universities	Angela Baker, Rachel Sugars, Lily Makurah
26 th February 25			
2 nd April 25			

Health and Social Care Scrutiny Board Work Programme 2024/25

Date	Title	Detail	Cabinet Member/ Lead Officer/ Organisation
TBC	Virtual Beds	Identified at the meeting on 15.02.23 – to consider how Virtual Beds work and the technology required for them to be successful.	UHCW CWPT ICB Pete Fahy
	Preparing for Adult Social Care CQC Assurance	To scrutinise the work being done in preparation for the reintroduction of CQC inspections of Adult Social Care from April 2023.	Pete Fahy
	ICB efficiency savings	An item requested at the meeting on 17 th January to look in more detail at the proposed actions to make significant efficiency savings at the ICB	Rose Uwins
	GP/Primary Care Access	To cover access to GP's and other primary care, particularly in relation to reducing pressure on A&E / Include Pharmacy First	Rose Uwins - ICB
	Access to Dentistry	To consider access to dentistry services. (Tie in with GP/Primary care)	Rose Uwins
	Digital Access to Health	Partners supporting switch to digital	Rose Uwins
	A& E Waiting Times	discuss what progress has been made to reduce A&E waiting times. To include Clinical Assessment Units / Minor Injuries Unit, and data on emergency readmissions. (Before winter – statistics of what went wrong etc)	UHCW – Allison Duggal
	Integrated Health and Care Delivery Plan	To identify which of the 3 areas of focus the board would like to look at. Including work with newly arrived communities.	ICB Rose Uwins
	Improving Lives (July 2025)	A follow up item from the meeting on 10 th April 2024, to review following 12 months of implementation of a whole city approach	Pete Fahy UHCW

Health and Social Care Scrutiny Board Work Programme 2024/25

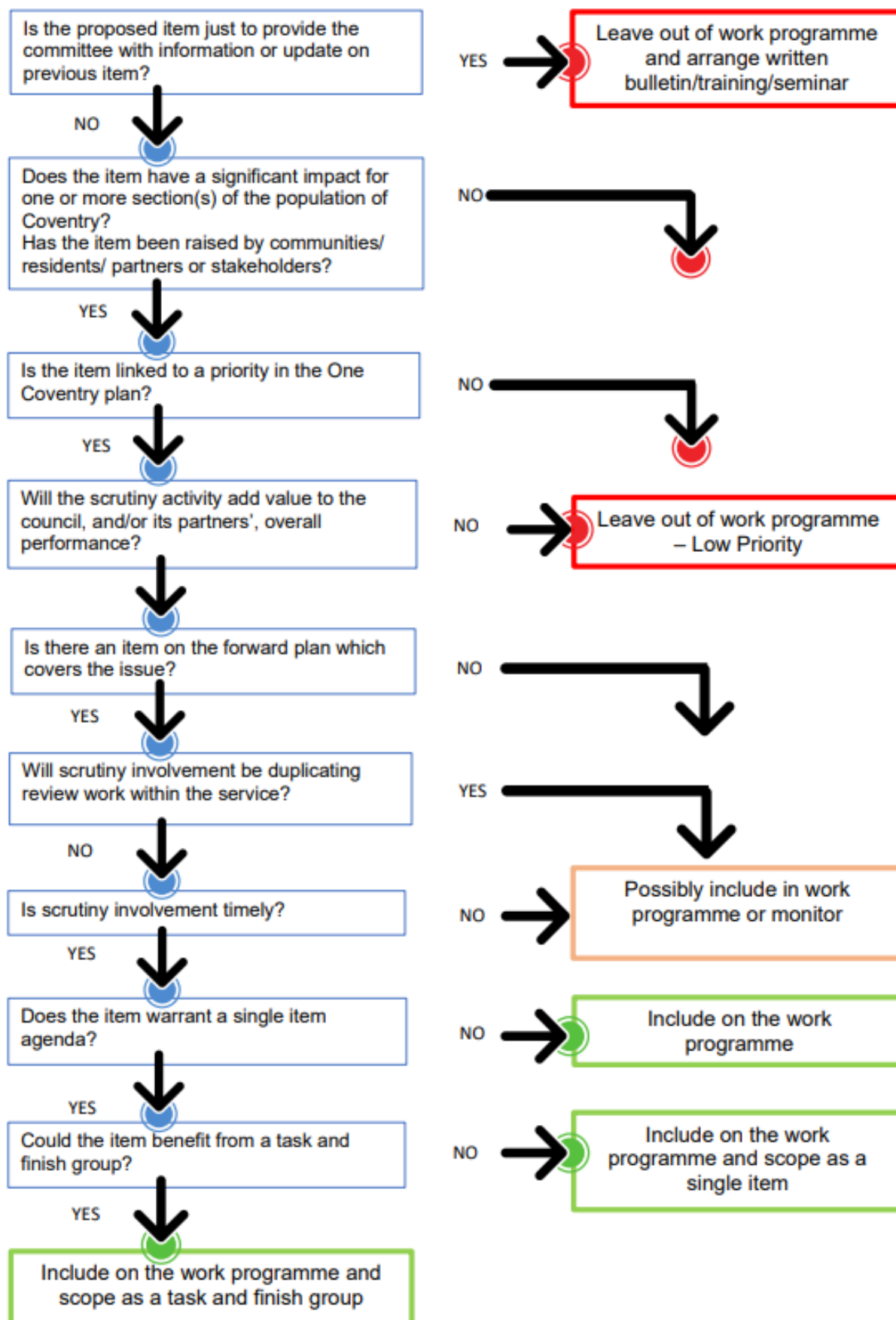
Date	Title	Detail	Cabinet Member/ Lead Officer/ Organisation
	Healthwatch Annual Report	To consider the work of Healthwatch and how scrutiny can use their findings	Ruth Light
	Safeguarding Adults Annual Report	Update	R Eaves Cllr Bigham
	Sport and Physical Activity Strategy	Refreshing the Sports Strategy 2014-24 – Members participation during consultation	Catherine Aldridge / Amy Parker
	Womens Health Strategy	In development/partnership with ICB (Women Health Hubs)	Allison Duggall / ICB
	Ambulance Service / Fire Service	Partnership working	
	PALS		UHCW
	Adult Social Care Self-Assessment	As part of CQC Local Authority Assurance Arrangements Local Authorities are completing a 'Self Assessment'. This is detailed report identifying how we are delivering Adult Social Care services in Coventry. Our Annual Report mirrors the content of this assessment highlighting some of the work we are doing through examples and spotlights on the support we provide.	Pete Fahy / Cllr Bigham
	Adult Social Care Local Account (Cabinet)	Report due with Cabinet on the 1 st October and Council on 15 th October. Every year Coventry City Council produces a report which describes what Adult Social Care service is doing to help improve the lives of vulnerable people and how well as a service it is performing along with areas where we are seeking to develop further.	Pete Fahy / Cllr Bigham

Frequently Used Health and Social Care Acronyms

Health and Social Care Scrutiny Board Work Programme 2024/25

- ASC – Adult Social Care
- CQC – Care Quality Commission
- CWPT – Coventry and Warwickshire Partnership Trust
- CWS – Coventry Warwickshire Solihull
- DFG – Disabled Facilities Grant
- DPH – Director of Public Health
- ENAS – Extended non-attendance at school
- EOL – End of Life
- GEH – George Elliott Hospital
- JHOSC – Joint Health Overview and Scrutiny Committee
- H&WB – Health and Wellbeing
- H&WBB – Health and Wellbeing Board
- HOSC – Health Overview and Scrutiny
- ICB – Integrated Care Board
- ICP – Integrated Care Partnership
- ICS - Integrated Care System
- LMC – Local Medical Council
- MAT – Multi Academy Trust
- MSP – Making Safeguarding Personal
- PCN – Primary Care Network
- SAB – Safeguarding Adults Board
- SAR – Safeguarding Adults Reviews
- SWFT – South Warwickshire Foundation Trust
- UHCW – University Hospitals Coventry and Warwickshire
- WMAS – West Midlands Ambulance Service

Work Programme Decision Flow Chart



DRAFT