



NOTES
 Note:
 All fry stations have automatic fire suppression devices fitted.

Fire Strategy Legend :

- Fire exit door - Doors to include emergency release and 'fire exit' signage - 100mm white block letters on green background.
- 'Fire door keep shut' signage - 100mm white letters on green background.
- 'Fire Exit keep clear' signage - 100mm white letters on green background.
- 'Push bar to open' signage - 100mm white letters on green background.
- 'Fire exit' signage - 100mm white letters on green background.
- Fire instruction notice.
- 1.5KG CO2 Fire extinguisher with description signage to wall.
- 9 Litre water fire extinguisher with description signage to wall.
- 6 Litre aff foam spray fire extinguisher with description signage to wall.
- Fire blanket with description signage to wall.
- Anslul system
- Break glass alarm point
- Emergency Voice Communication System
- Emergency Call Point
- Evacuation Chair
- Disabled refuge intercom
- Smoke detector (optical)
- Heat detector (fixed temp)
- Heat detector (rate of rise)
- Combined smoke detector (optical) and sounder
- Flashing indicator light
- Electronic fire alarm sounder + beacon
- Fire alarm panel
- Fire alarm interface unit

Licensable activity:
 Sale of Hot food & Drink after 11pm.

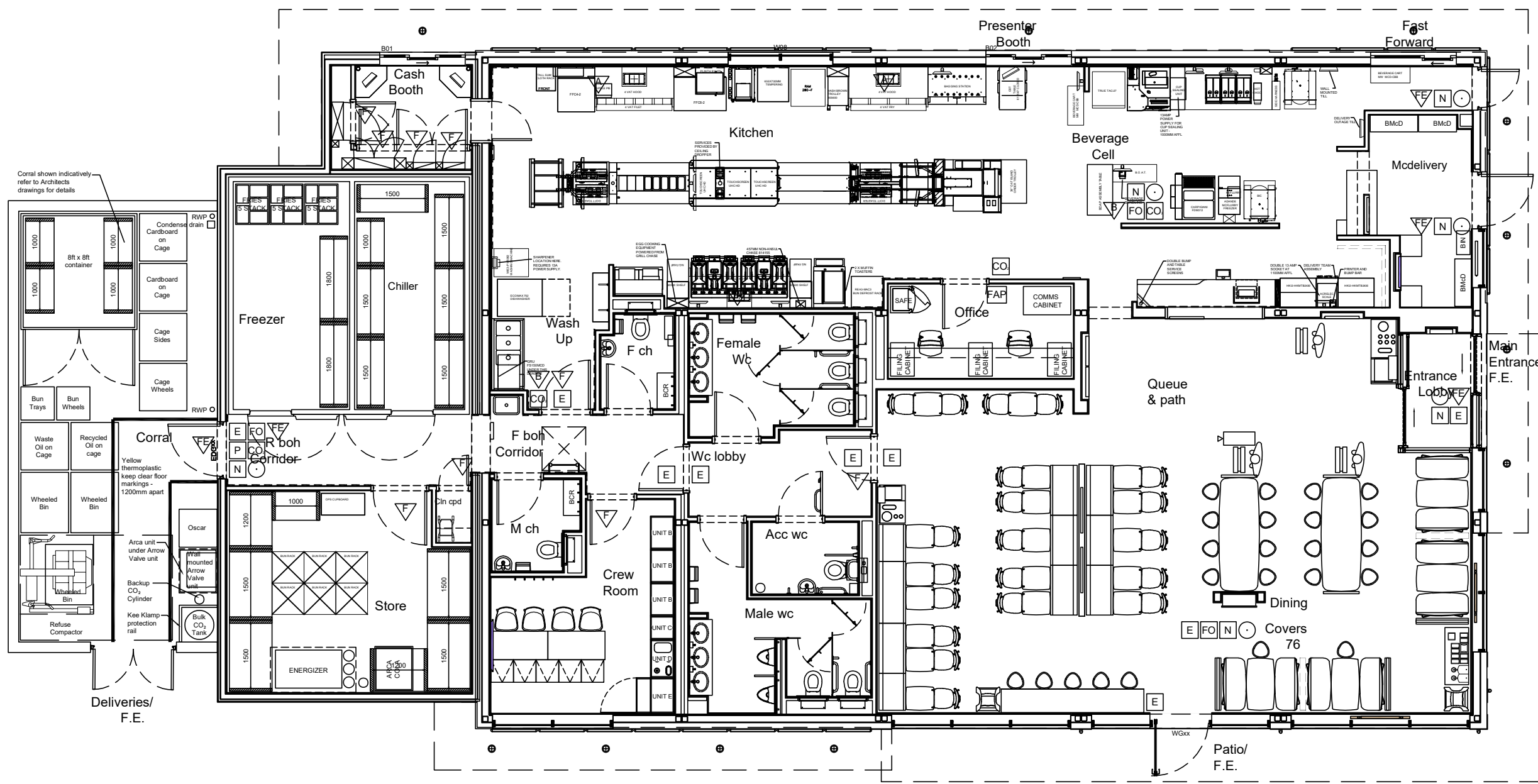
Rev. Date. Amendments

PROJECT
#1686 Coventry

 Abbey Park ASDA
 Coventry
 Warwickshire
 West Midlands

TITLE
**Ground floor plan
 (For Licencing)**

Date:	Jan 2023	Drawn:	C.T.S.G.	Discipline:	Arch
Scale:	1:100@A3	Type:	DRG. No.	Issue:	001
			L/1686/001		



Corral shown indicatively refer to Architects drawings for details