



Coventry and Warwickshire Palliative and End of Life Care DRAFT Strategy Overview.

2024-2029

Health Oversight Committee : 22nd March 2023

What is palliative and end of life care?

Palliative care is about improving the quality of life of anyone facing a life-limiting condition. It includes physical, emotional and spiritual care.

We want our people of Coventry and Warwickshire to live as well as possible for as long as possible.

End-of-life care is the treatment, care and support for people who are nearing the end of their lives. It is an important part of palliative care and aims to help people live as comfortably as possible in their last months, weeks or days of life and to die with dignity.

Working together, we aim to provide physical, emotional and spiritual support for the individual and those who matter to them.

The Coventry and Warwickshire palliative and End of Life Care Strategy for 2024-2029

The Palliative and End of Life Care Strategy is an overview of how health, social and third sector care will work together across Coventry and Warwickshire to improve the lives of people with palliative and end of life care needs and those who look after them.

We have asked people with palliative and end of life needs, their carers, those who live in Coventry and Warwickshire and our partners in health and social care what we should focus on to improve the care and support we provide to people.

We have discussed all areas of palliative and end of life care, from activities aimed at identifying people who are likely to be in the last year of life, through to care in the final months, weeks and days of people's lives.

Our Priorities

Information

Access

Support

Education & Training

Our priorities: what we want to achieve.

1. Provide **information** which focuses on identification of people in the last 12 months of life, early intervention and support services.

2. **Access** to timely palliative and end of life care with support throughout, for all of our diverse communities.

3. **Supporting** people diagnosed with a life limiting condition and those who matter to them, carers and communities to prevent crisis.

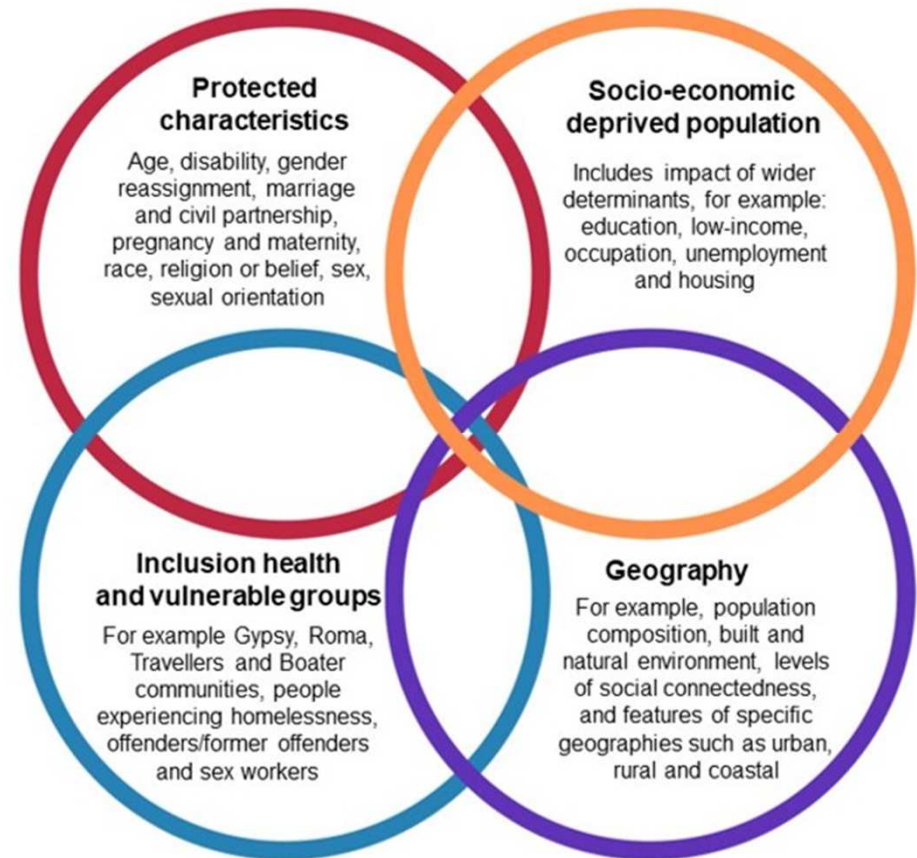
4. Improving the quality of personalised care and support planning for people with palliative care needs, including planning for the end of life, through **education and training** for all.

Health Inequalities in Coventry and Warwickshire

Health inequalities are unfair differences in health between our community groups.

In Coventry and Warwickshire these differences have meant some of our communities have poorer access to information, appropriate services and planning for end-of-life care.

Our aim is to provide equity for all of our diverse communities.



Timeline for the strategy development

Month	Activity
January – February 2023	Co-production with people, health, social, third sector and independent providers
February - March 2023	Draft strategy fully developed with Equality and Quality Impact Assessment
March - April 2023	Approval for strategy engagement sought
April – May 2023	Action Plan development and engagement planning
June – July 2023	Engagement and commencement of action plan
August 2023	Review of engagement feedback
Sept – December 2023	Governance
Jan 2024	Strategy launch

National Framework: Ambitions for palliative and end of life care



01 Each person is seen as an individual

02 Each person gets fair access to care

03 Maximising comfort and wellbeing

04 Care is coordinated

05 All staff are prepared to care

06 Each community is prepared to help

Each person is seen as an individual

What we will do:

- Improve identification of people in the last 12 months of life.
- Improve personalised care and support planning, through shared-decision making which includes advanced care planning.

Each person gets fair access to care

What we will do:

- The people of Coventry and Warwickshire will be able to access information regarding palliative, end of life and support services across Coventry and Warwickshire.
- Health and social care staff will have access to information in order to understand the palliative and end of life care pathways and services which are available to support people across Coventry & Warwickshire.

Maximising comfort and wellbeing

What we will do:

- Symptom management support is available to people when needed
- 24/7 access to anticipatory medication is available
- Support for emotional and spiritual as well as practical living where needed.

Care is co-ordinated

What we will do:

- Pro-actively support people with palliative and end of life needs and their carers across health and social care to prevent crisis.
- Work collaboratively across health and social care to support people with palliative and end of life care needs, those important to them and their carers.



All staff are prepared to care

What we will do:

- All professionals and volunteers are appropriately supported and trained to provide Palliative and End of Life Care.
- The health and wellbeing of our staff is prioritised

Each community is prepared to help



What we will do:

- Understand the community support services which are available across Coventry and Warwickshire
- Understand the education and training needs of our community assets and how we can link people, those important to them and carers into community support networks.

Next Steps

- Draft final strategy for engagement
- Draft Delivery Plan with detailed outcomes, measurables and owners.
- Plan systemwide engagement for June-July 2023