

---

Council

21 June 2022

**Name of Cabinet Member:**

Cabinet Member for Policy and Leadership: Councillor G. Duggins

**Director Approving Submission of the report:**

Director Law and Governance

**Ward(s) affected:**

Citywide

**Title:** Creation of Integrated Care Systems

---

**Is this a key decision?**

No

---

**Executive Summary:**

The Health and Care Act 2022 sets up a series of Integrated Care Systems (ICSs) to cover England.

The ICSs for each relevant area will include an Integrated Care Board (ICB), the key element in the new system which will assume the commissioning responsibilities currently undertaken by clinical commissioning groups (CCGs).

There will also be an Integrated Care Partnership (ICP), a committee of the ICB intended to give a voice to the wider health and care community.

Both the Integrated Care Board (ICB) and the local authority will be statutory members of the ICP so will be directly involved in developing the integrated care strategy and will be equal partners.

In Coventry the relevant area is across Coventry and Warwickshire and in readiness for the new legislation to come into force appointments from the City Council are to be made to the relevant boards and partnerships.

**Recommendations:**

**Council is recommended to:**

- (1) Confirm the appointment of the Cabinet Member for Public Health and Sport to the Integrated Care Partnership for Coventry and Warwickshire.
- (2) Note the following officer appointments:
  - a) Chief Partnership Officer (as nominee of the Chief Executive) to the Integrated Care Board for Coventry and Warwickshire
  - b) Chief Partnership Officer to the Integrated Care Partnership for Coventry and Warwickshire
  - c) Director of Adult Services and Housing (as Chair of the Coventry Care Collaborative) to the Integrated Care Partnership for Coventry and Warwickshire
  - d) Director of Public Health to the Integrated Care Partnership for Coventry and Warwickshire

**List of Appendices included:**

Appendix 1: The Kings Fund Video demonstrating how the health and care system will collaborate to deliver joined-up care <https://www.kingsfund.org.uk/audio-video/how-does-nhs-in-england-work>

**Other useful background papers:**

None

**Has it been or will it be considered by Scrutiny?**

No

Scrutiny will have the opportunity to consider the ongoing development of the Integrated Care System

**Has it been or will it be considered by any other Council Committee, Advisory Panel or other body?**

No

**Will this report go to Council?**

Yes 21 June 2022

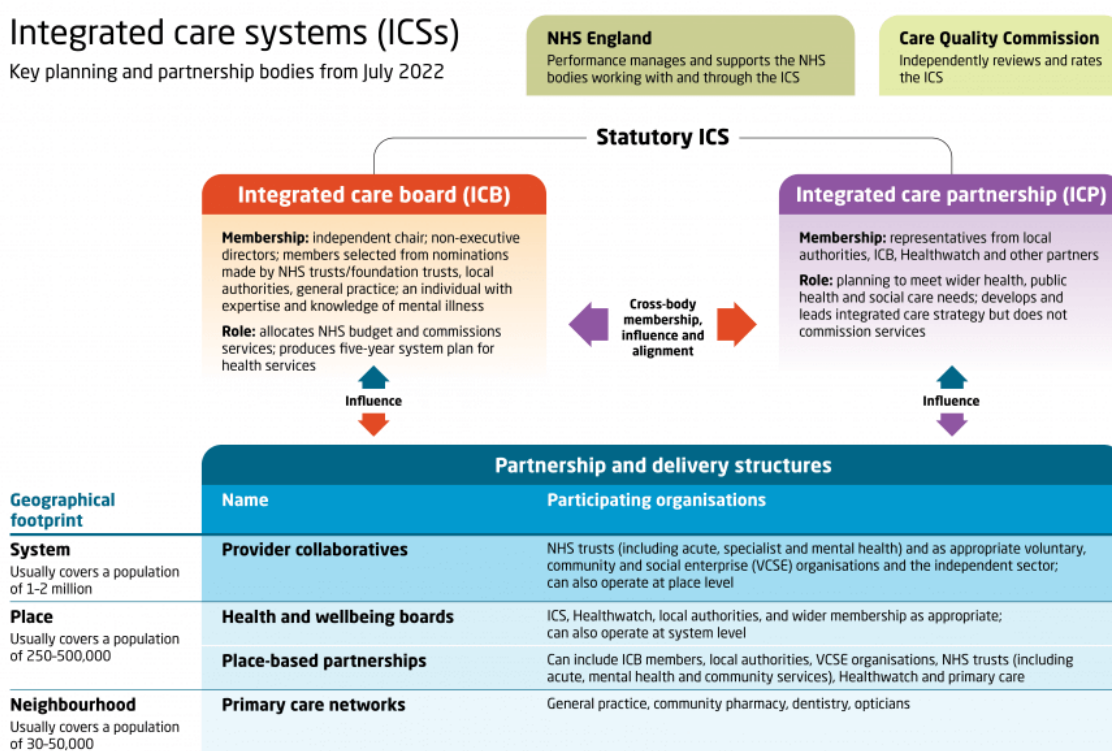
**Report title: Creation of Integrated Care Systems**

**1. Context**

- 1.1 The Integrated Care Systems (ICS) are geographically based partnerships that bring together providers and commissioners of NHS services with local authorities and local partners to plan, co-ordinate and commission health and care services.
- 1.2 The aim is to develop a more collaborative approach with partners working together to integrate services and improve population health.
- 1.3 These ambitions were put on a statutory footing with the Health and Social Care Act 2022 which is intended to come into force in July 2022.
- 1.4 The key proposed system and partnership arrangements envisaged by the Act are outlined below in the diagram below alongside the description of the boards functions (as produced by the Kings Fund); however it is recognised that flexibility is necessary to meet local needs.

## Integrated care systems (ICCs)

Key planning and partnership bodies from July 2022



TheKingsFund

## 1.5 Integrated care board (ICBs)

Under the provisions of the Health and Care Act 2022 Integrated Care Boards have the function of arranging for the provision of services for the purposes of the health service in England in accordance with this Act

The ICB will take on the NHS planning functions previously held by clinical commissioning groups (CCGs) and are likely to absorb some planning roles from NHS England. ICBs will have their own leadership teams, which will include a chair and chief executive, and will also include members from NHS trusts/foundation trusts, local authorities, and general practice, selected from nominations made by each set of organisations, and an individual with expertise and knowledge of mental illness. In consultation with local partners, the ICB will produce a five-year plan (updated annually) for how NHS services will be delivered to meet local needs. In developing this plan and carrying out their work, the ICB must have regard to their partner ICP's integrated care strategy and be informed by the joint health and wellbeing strategies published by the health and wellbeing board. Additionally, each ICB must outline how it will ensure public involvement and consultation.

ICBs will also contract with providers to deliver NHS services and will be able to delegate some funding to place level to support joint planning of some NHS and council-led services.

## **1.6 Integrated care partnership (ICP)**

The ICP will operate as a statutory committee, bringing together the NHS and local authorities as equal partners to focus more widely on health, public health and social care. ICPs will include representatives from the ICB, the local authorities within their area and other partners such as NHS providers, public health, social care, housing services, and voluntary, community and social enterprise (VCSE) organisations. They will be responsible for developing an integrated care strategy, which sets out how the wider health needs of the local population will be met. This should be informed by any relevant joint strategic needs assessments and the Place Health and Well Being Board Strategies. In developing its integrated care strategy, the ICP must involve the local Healthwatch, the VSCE sector, and people and communities living in the area. ICPs will not directly commission services.

## **1.7 Local Arrangements**

The concept of 'Place' is a significant feature of the move to Integrated Care Systems with as much as reasonably practicable to be delivered at place level, which is Coventry and opposed to 'system' which refers to Coventry and Warwickshire.

The mechanisms for Place delivery are two fold.

Firstly, the establishment of Care Collaboratives comprising local NHS and local authorities, one for Coventry and one for Warwickshire for which 2022/23 forms a shadow year to put the arrangements in place for agreed delegated responsibilities from the ICB to pass to the Care Collaboratives. Such delegations from the ICB may include resources and performance assurance for agreed programmes of work in relation to the delivery of health and care in Coventry.

Secondly, the development of the One Coventry Partnership which is broad stakeholder group who will work together to deliver the strategic aspirations of the

One Coventry plan which will impact of our residents in a number of ways including improved health outcomes.

## **1.8 Health and Well Being Board**

The introduction of ICBs and ICPBs do not alter the role of Health and Wellbeing Boards and as such remain a forum in which key leaders from the local health and care system could work together to improve the health and wellbeing of their local population.

## **2. Options considered and recommended proposals**

- 2.1** Council is recommended to approve the appointment of the Cabinet Member for Public Health and Sports (and Chair of the Health and Wellbeing Board) to the Integrated Care Partnership to ensure that the local authority effectively engages with the new systems approach to improve the delivery of health services to the residents of Coventry.

## **3. Results of consultation undertaken**

- 3.1** The proposals and makeup of the new Integrated Care System are prescribed within the new Health and Care Act 2022. However, the local authority, through the Health and Wellbeing Board and via representation from senior officers, has had an influential role in the development of the new local partnership arrangements across Coventry and Warwickshire.

## **4. Timetable for implementing this decision**

- 4.1** The new Act is envisaged to be coming into force in July 2022 and the appointments to the new boards and partnerships should be in place by that date.

## **5. Comments from Chief Operating Officer (Section 151 Officer) and Director of Law and Governance**

### **5.1 Financial implications**

There are no direct financial implications for the Council arising from this report.

### **5.2 Legal implications**

The Health and Care Act 2022 establishes the new Integrated Care System (ICS) and requires NHS England to establish the ICB and ICP. It further requires the ICB to publish its constitution in line with the Act. The local authority are statutory members to the new ICS.

## **6. Other implications**

### **6.1 How will this contribute to the Council Plan?**

The proposals around the new ICS will improve the quality of life for Coventry people improving health and wellbeing by:

- helping local residents lead healthier lifestyles including better mental health; and
- helping people to maintain their independence and supporting them when they need help.

## **6.2 How is risk being managed?**

The appointments to the ICS board and partnership, that reflects the role of the local authority in the new legislation, will ensure that the Council meets its legal obligations and will also ensure that the City Council retains the influence within the new system to ensure the needs of Coventry residents are being considered.

## **6.3 What is the impact on the organisation?**

To put in place appropriate governance arrangements which reflect the provisions of the Health and Care Act 2022.

## **6.4 Equalities / EIA**

The City Council as members of the ICS can continue to ensure that the public sector equality duty (PSED), which requires public bodies to have due regard to the need to eliminate discrimination, advance equality of opportunity and foster good relations between different people when carrying out their activities, is key to decisions being made within the new system.

## **8.5 Implications for (or impact on) climate change and the environment**

None

## **8.6 Implications for partner organisations?**

The need for collaboration across partner organisations is key to meeting the ambitions of the new ICS.

**Report author(s):**

**Name and job title:** Julie Newman; Chief Legal Officer

**Directorate:** Law and Governance

**Tel and email contact:** 02476 976891/ julie.newman@coventry.gov.uk

Enquiries should be directed to the above person.

<b>Contributor/approver name</b>	<b>Title</b>	<b>Directorate or organisation</b>	<b>Date doc sent out</b>	<b>Date response received or approved</b>
<b>Contributors:</b>				
Legal: Sarah Harriot	Governance Lawyer	Law and Governance	26.5.22	27.5.22
Suzanne Bennett	Governance Services Co-ordinator	Law and Governance	26.5.22	26.5.22
<b>Names of approvers for submission:</b> (officers and members)				
Ewan Dewar	Finance Manager		26.5.22	27.5.22
Barry Hastie	Chief Operating Officer		26.5.22	13.06.22
Kirston Nelson	Chief Partnership Officer		26.5.22	31.5.22
Pete Fahy	Director of Adult Services and Housing		26.5.22	30.05.22
Allison Duggal	Director of Public Health		26.5.22	13.06.22
Councillor Caan	Cabinet Member: Public Health and Sport		01.06.22	09.06.22
Councillor Duggins	Cabinet Member: Policy and Leadership		01.06.22	09.06.22

This report is published on the council's website:

[www.coventry.gov.uk/councilmeetings](http://www.coventry.gov.uk/councilmeetings)