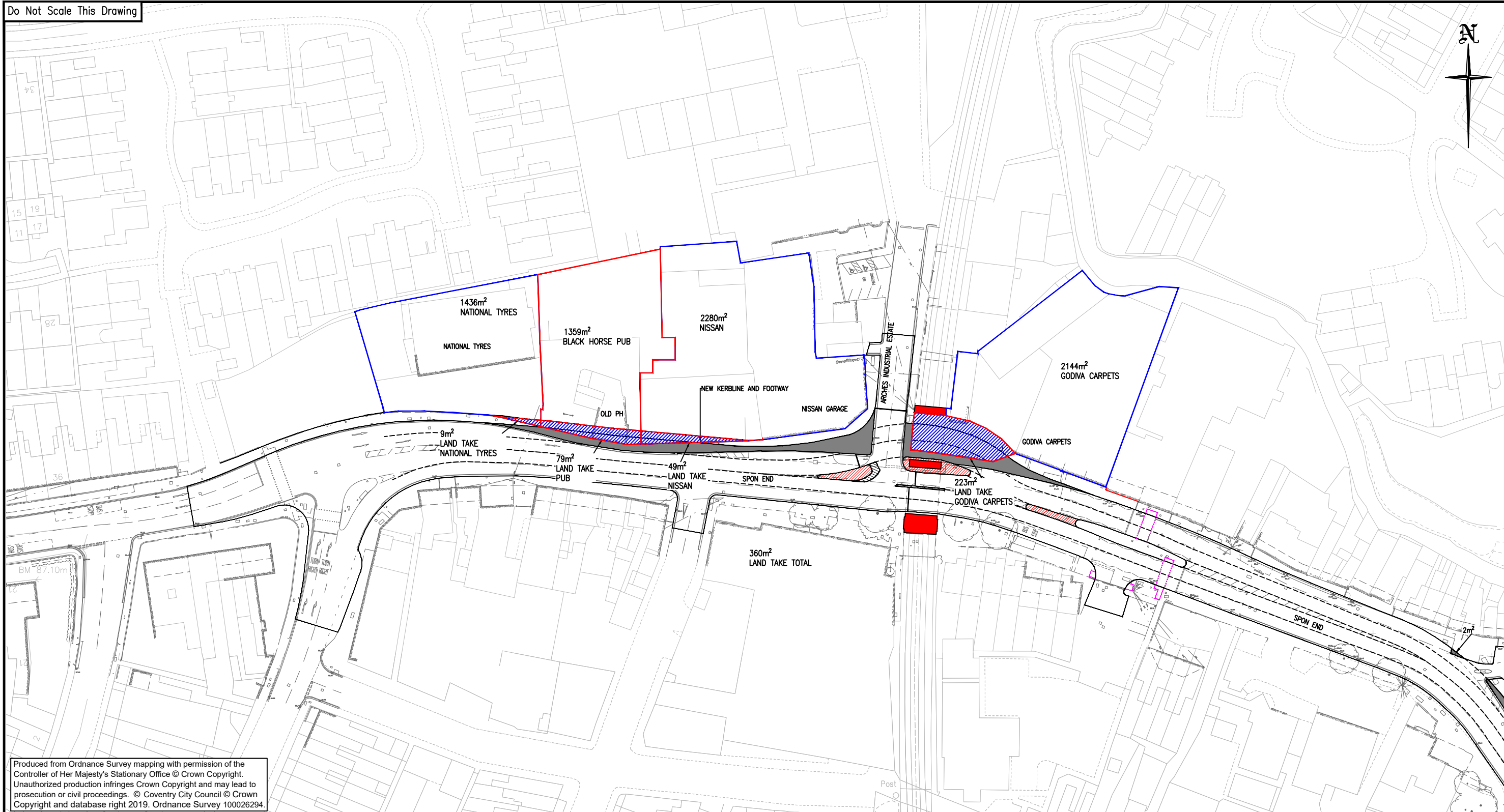


Do Not Scale This Drawing



Produced from Ordnance Survey mapping with permission of the Controller of Her Majesty's Stationary Office © Crown Copyright. Unauthorized production infringes Crown Copyright and may lead to prosecution or civil proceedings. © Coventry City Council © Crown Copyright and database right 2019. Ordnance Survey 100026294.

- LEGEND**
- PROPOSED STOP LINE
 - PROPOSED ROAD MARKINGS
 - PROPOSED REFUGE
 - EXISTING BRIDGE ABUTMENTS
 - LAND TAKE
 - FOOTWAY TO CARRIAGEWAY
 - CROSSING FEATURES
 - LAND REGISTRY BOUNDARY
 - VERGE TO FOOTWAY

Project Title:
SPON END PINCH POINT

Drawing Title:
BUSINESS LAND TAKE AND REGISTRY



PLACE DIRECTORATE, TRAFFIC AND NETWORK MANAGEMENT,
ENGINEERING DESIGN TEAM, FLOOR 10, ONE FRIARGATE, COVENTRY, CV1 2GN

Scale at A3: 1:1000	Status: INFORMATION
Drawn: RS 29/01/20	Checked: IL 29/01/20
Approved: IL 29/01/20	

Rev.	Date	Description	Drawn	Checked	Approved
Rev.	29/01/20	ADDED LAND REGISTRY BOUNDARY	RS	IL	IL
Rev.	11/12/19	ORIGINAL	RS	IL	IL

Drawing Number: SEA-PC/0043

Rev
A

P:\CSD\Engineering Design\4.0 Spon End Pinch Point\7.0 Design\1. Paper Files\SEA-PC-0043 TO 0046-REV A LAND TAKE PLUS LAND REGISTRY.dwg - 09/07/2020 14:01:45 - A3 FRAME 1 OF 2 - cvric955