

Connection to existing SVP as close to FFL within shop as possible

FWD to be 100 dia UPVC with bolted rodding eyes at DWC connection to FWD.
FWD connected by proprietary fitting to existing SVP.

All FWD drainage goods to be Upvc Marley or equivalent with flexible neoprene connectors fixed to party wall at 1:60 fall.

All WC units to be P-trap with flexible connectors to rigid FWD

Disabled Access WC to be Avalon or similar approved suite including handrails and fixed bars as specified in Part M

DWC door to open out and fitted with rising butt hinges and disabled indicator bolts

Baby change shelf to DWC area.

New doors to be 1/2hrFR as indicated with 25 rebated stops to frame. Intumescent protection to frames

Increased opening width quoined up in blockwork to incorporate 2No Catnic BXD 100 box lintels back-to-back to extended opening if existing lintels overspanned, to be checked on site.

New Internal walls to be non-loadbearing 100 x 50 sw timber studded with 100 nom thick Rockwool sound absorbing rigid board total cavity fill. wall faces to be 12.5 plasterboard both sides with 5 skim finish to Cafe and half-height tiling internally.

Mains water to be provided to all sink locations and terminated in a securable stop tap to ensure wholesome water is provided.
Cold water to be piped insulated to all cold water outlets.

All hot water outlets to have thermostatic temperature control valves at outlet to enable higher temperature water to be available to washing areas, but controlled temperature to washhand basins and DWC all in accordance with Part G .

All fire doors to be self closing.

All escape doors to outside to be fitted with Means of Escape opening locks to avoid key necessity in emergency.

All switches and sockets to be positioned in accordance with Doc M diagram 29

Mech extractor to new WC's to be 3 ac/hr low energy ducted to outside air through roof or out through back wall.

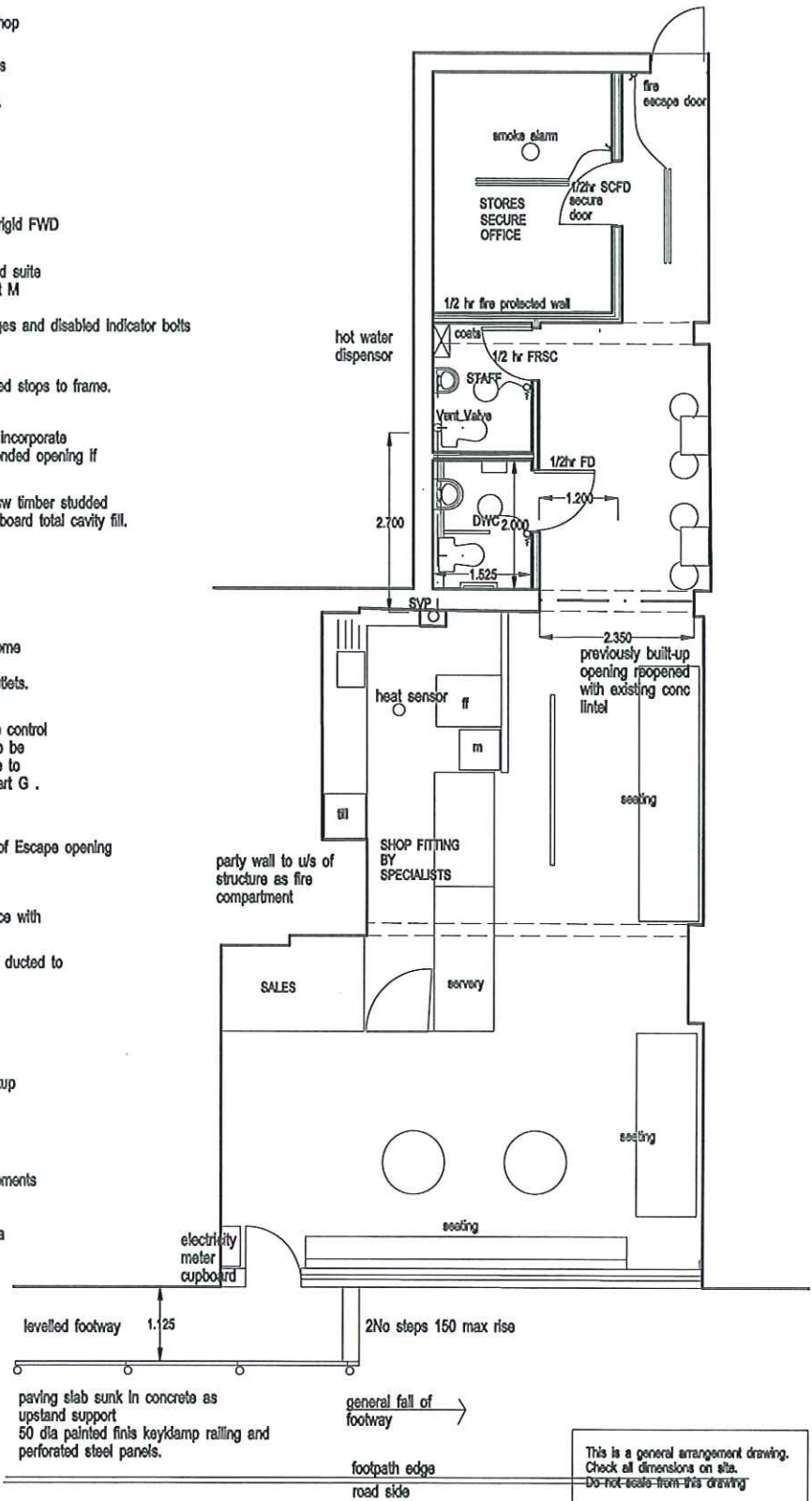
Fire protection to BS5268. Smoke detectors to corridor and heat detector to Kitchen area ceiling.
Mains powered alarm all detectors interlinked.

Fire detection to be to BS5839 pt 6 with battery backup interlinked.

All electrical works to be carried out to meet the requirements of Part P of the building Regulations 2005 by a person competent to do so.

Prior to completion the council are to be provided with a copy of either:

1. An electrical installation certificate issued under a competent person scheme;
- or
2. An electrical installation certificate as defined in BS7671 signed by a person competent to do so.



PROPOSED COFFEE SHOP
WILMCOTE GREEN
ALDERMINSTER ROAD
COVENTRY
CV5 7JS
FOR MR S. CASEY-POOLE

PROPOSED PLAN



SCALE 1 : 50
DECEMBER 2016

330-SK-103d

